

NMMU VPN Configuration Guidelines

Revision: 1

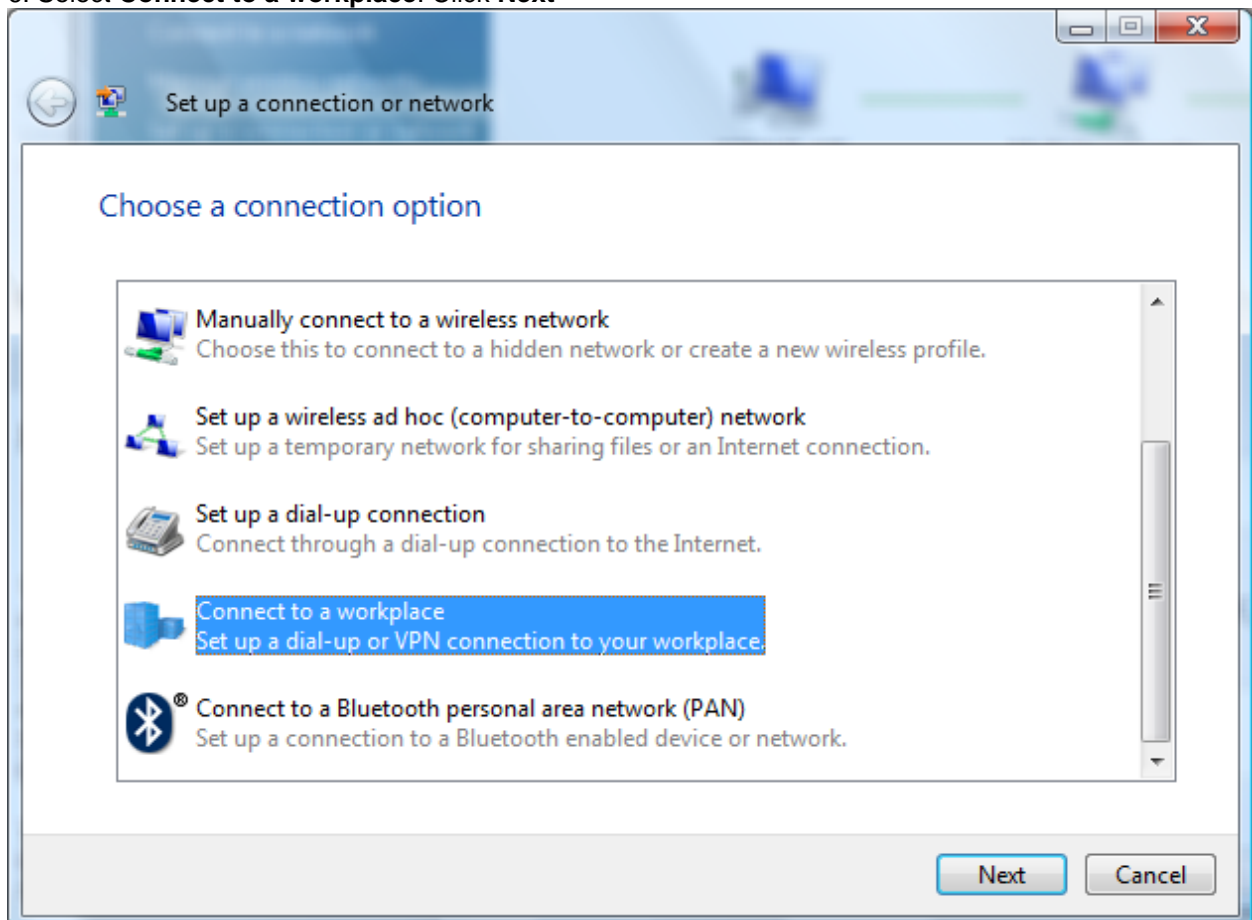
Date: 5 March 2009

Configuration for Microsoft Windows Vista Ultimate Edition

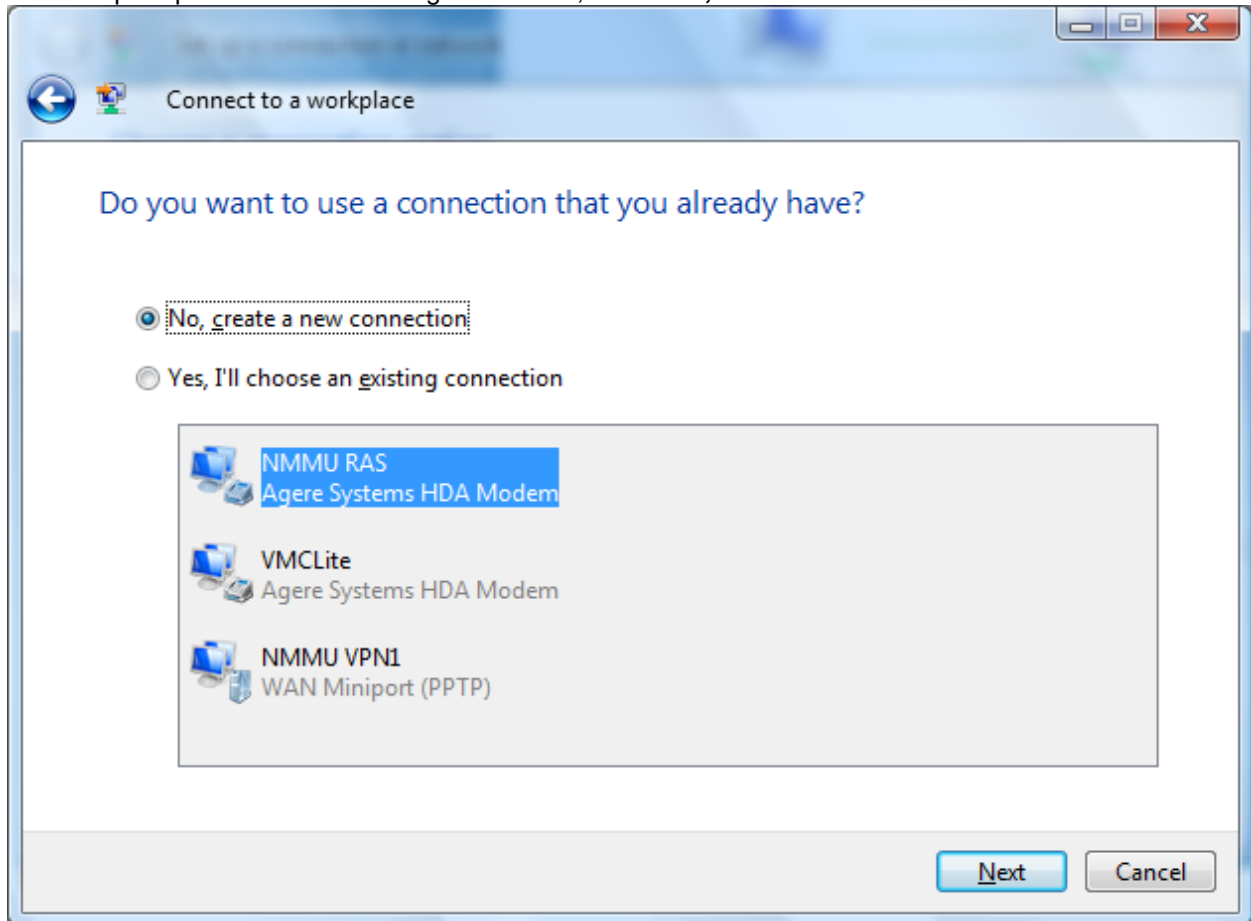
Setting up the VPN connection

Before starting with the VPN connection setup, please note that this service is ONLY available for registered NMMU staff and students!

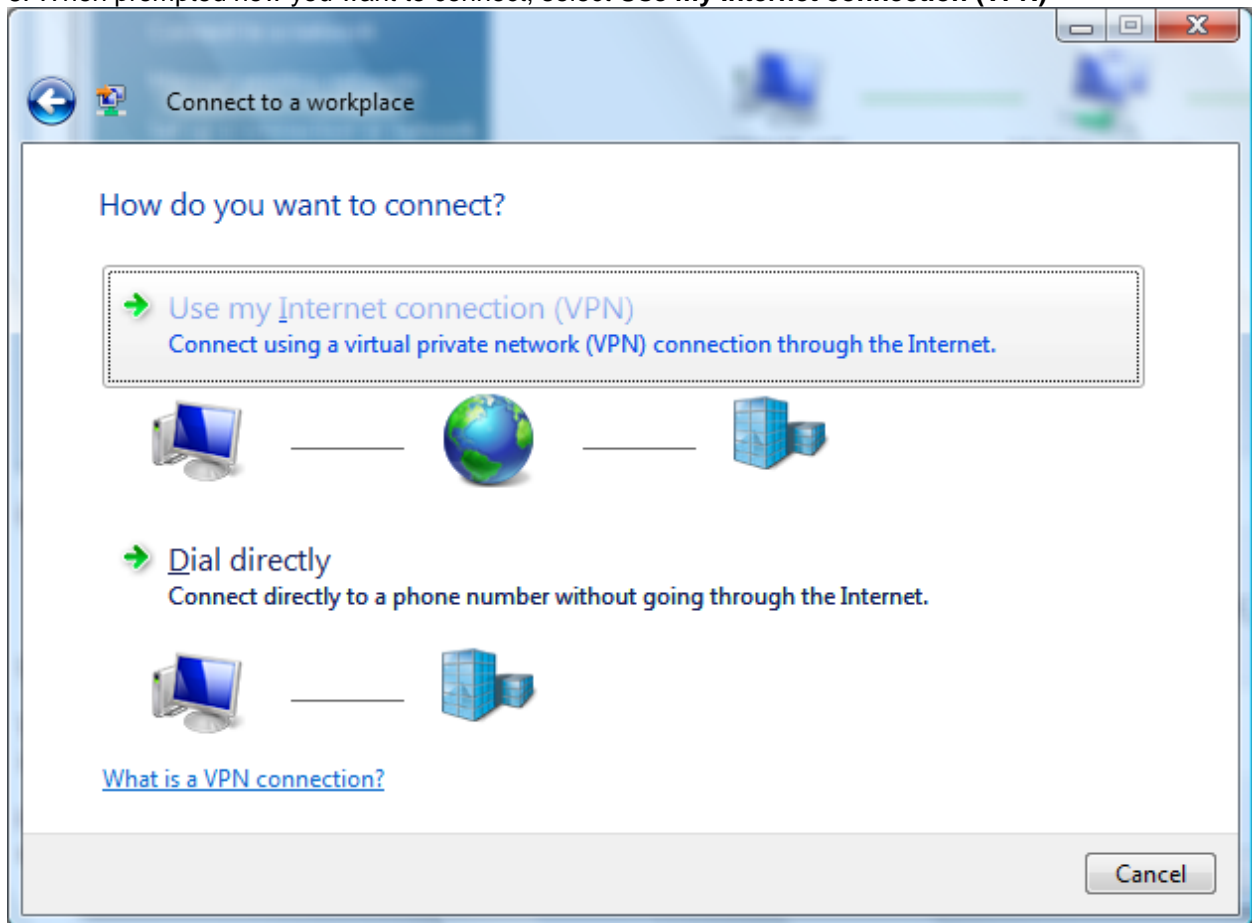
1. Enable your wireless card on your PC, and scan for wireless networks (if Windows does not pick one up automatically).
2. If you are warned that you are trying to connect to an unsecured network, select **Connect Anyway**. If prompted for a password, enter the wireless password supplied to you (if applicable).
3. Click **Start**, then click on **Control Panel**
4. Double-click on **Network and Sharing Centre**
5. Click on **Set up a connection or network**
6. Select **Connect to a workplace**. Click **Next**



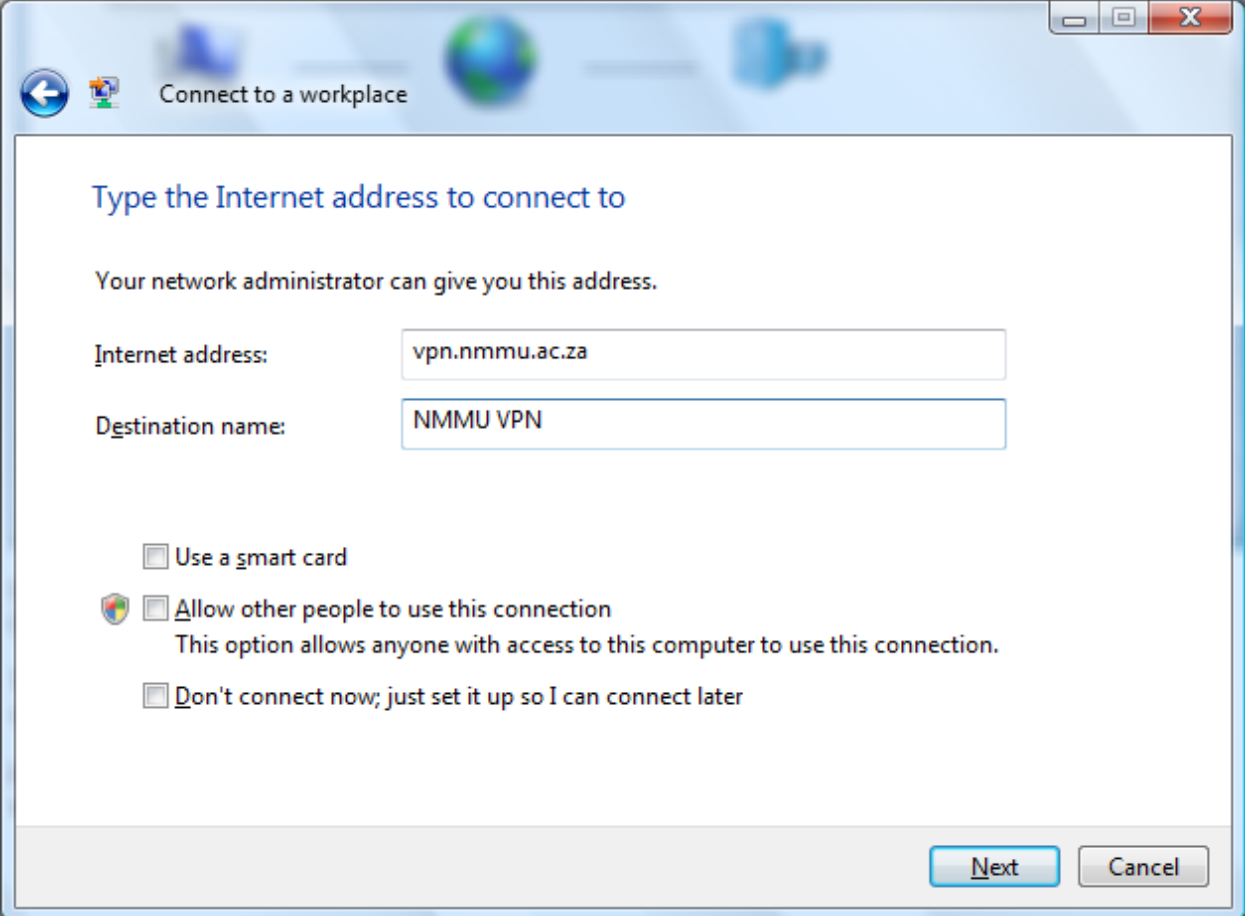
7. When prompted to use an existing connection, select **No, create a new connection**. Click **Next**



8. When prompted how you want to connect, select **Use my Internet connection (VPN)**



9. When prompted for an Internet address, enter **vpn.nmmu.ac.za**, and give it a **Destination name** (NMMU VPN would be fine). Click **Next**



Connect to a workplace

Type the Internet address to connect to

Your network administrator can give you this address.

Internet address:

Destination name:

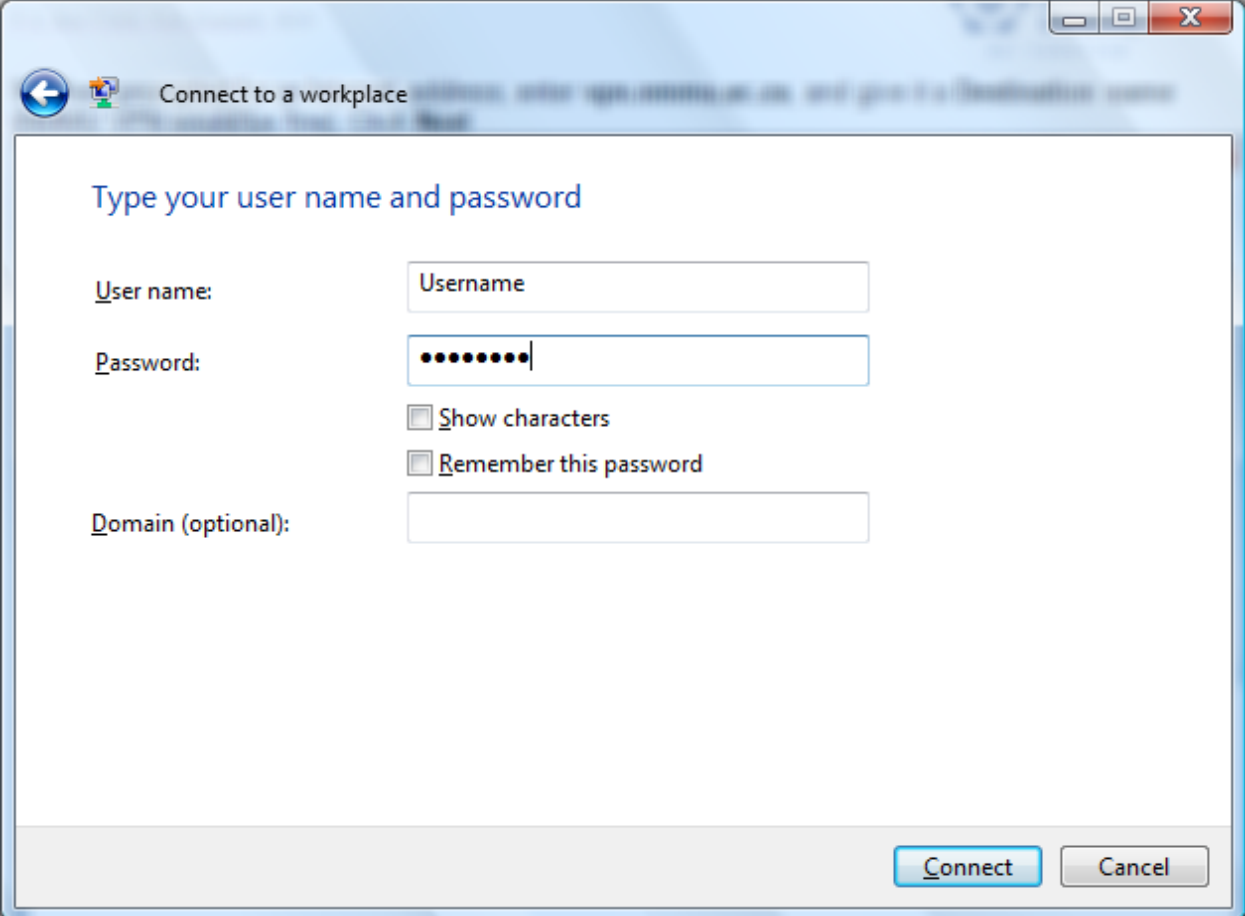
Use a smart card

Allow other people to use this connection
This option allows anyone with access to this computer to use this connection.

Don't connect now; just set it up so I can connect later

NOTE: For Saasveld Campus users, the address of the VPN server changes to saasvpn.nmmu.ac.za.

10. When prompted for a **Username** and a **Password**, enter your normal NMMU username and password, and click **Connect**



Connect to a workplace

Type your user name and password

User name: Username

Password: ●●●●●●●●

Show characters

Remember this password

Domain (optional):

Connect Cancel

11. If you are prompted for a dialback number, **CANCEL** that. Your PC will then be connected to the NMMU VPN.

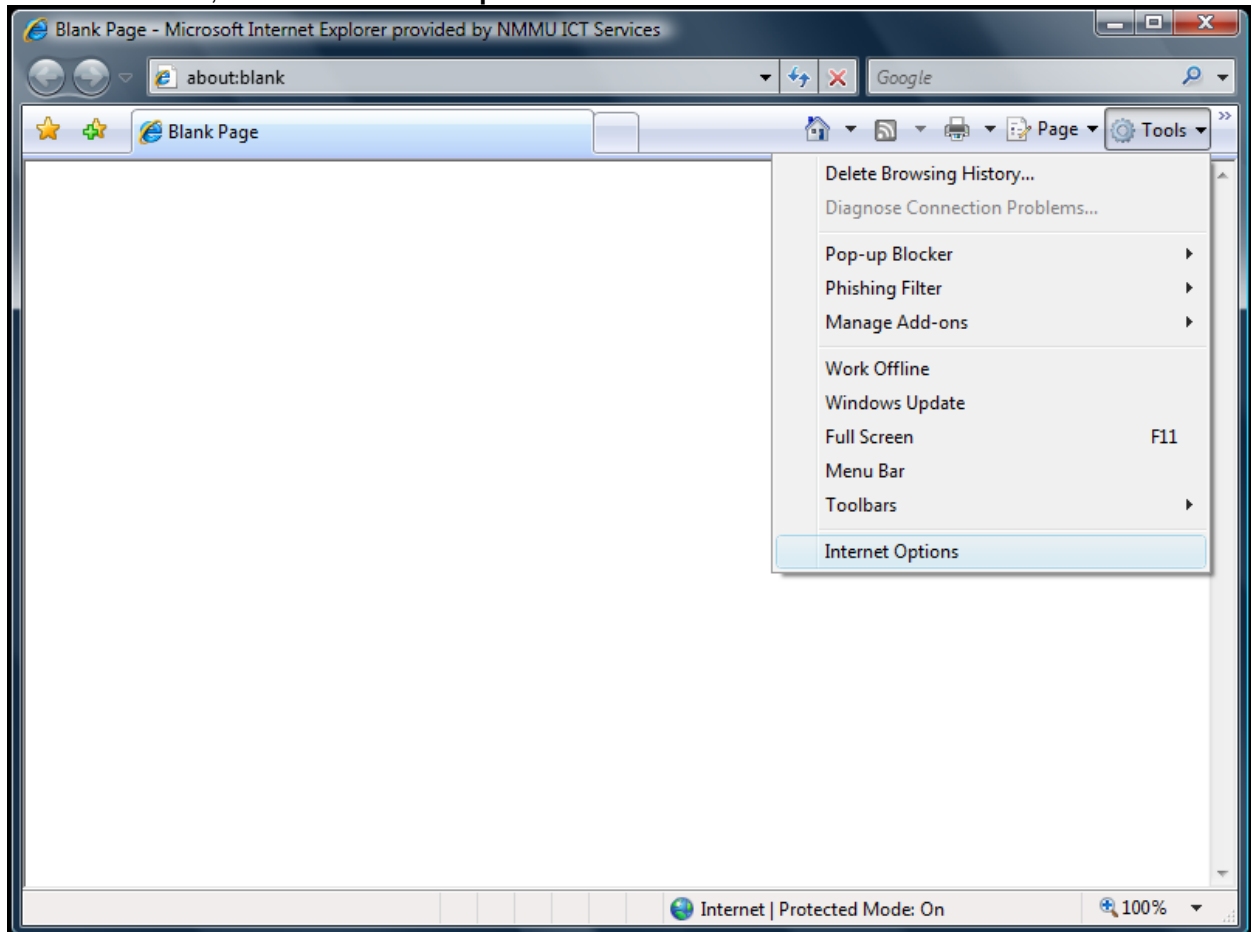
You can test this connection while being connected to the NMMU LAN.

You only need to go through this procedure once to create the VPN connection. Once it has been created, you simply double click on the icon on your Desktop to launch the VPN connection.

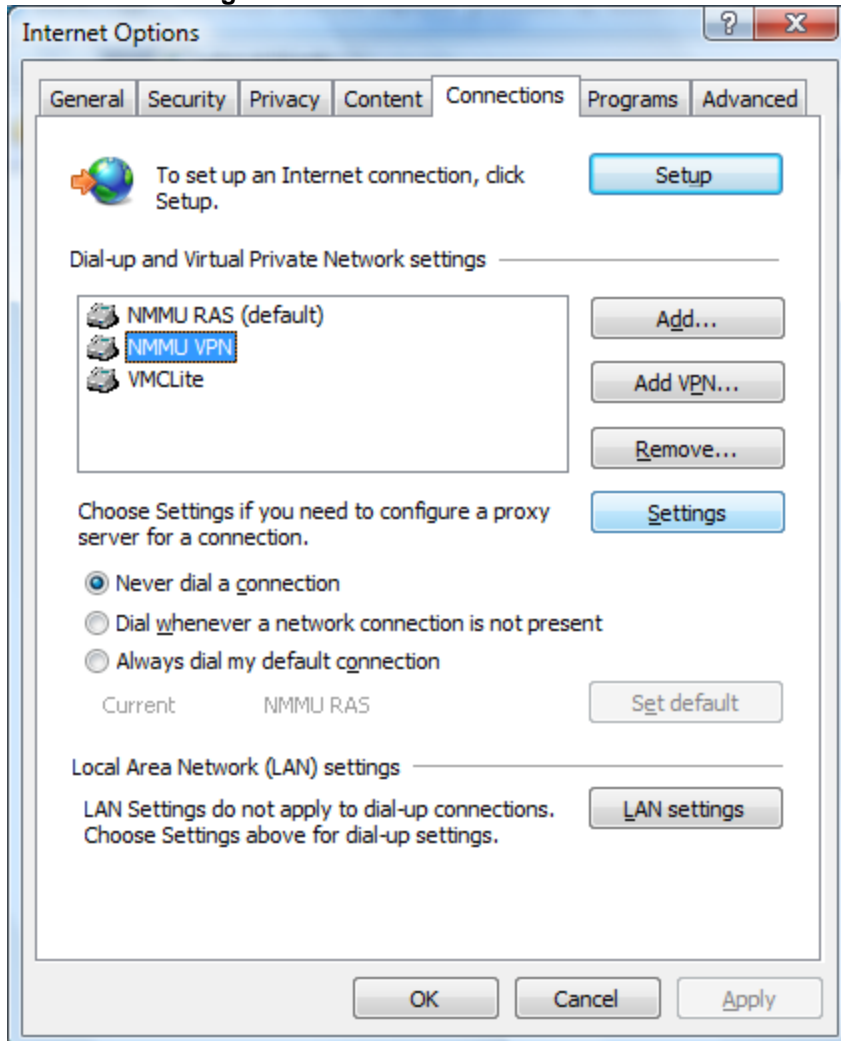
Once you have created the VPN connection, you need to configure an **Automatic configuration script** in Internet Explorer for your Internet connection to work. To do this, see the next section: **Configuring Internet Explorer**.

Configuring Internet Explorer

1. Launch Internet Explorer.
2. Click on **Tools**, and select **Internet Options...**



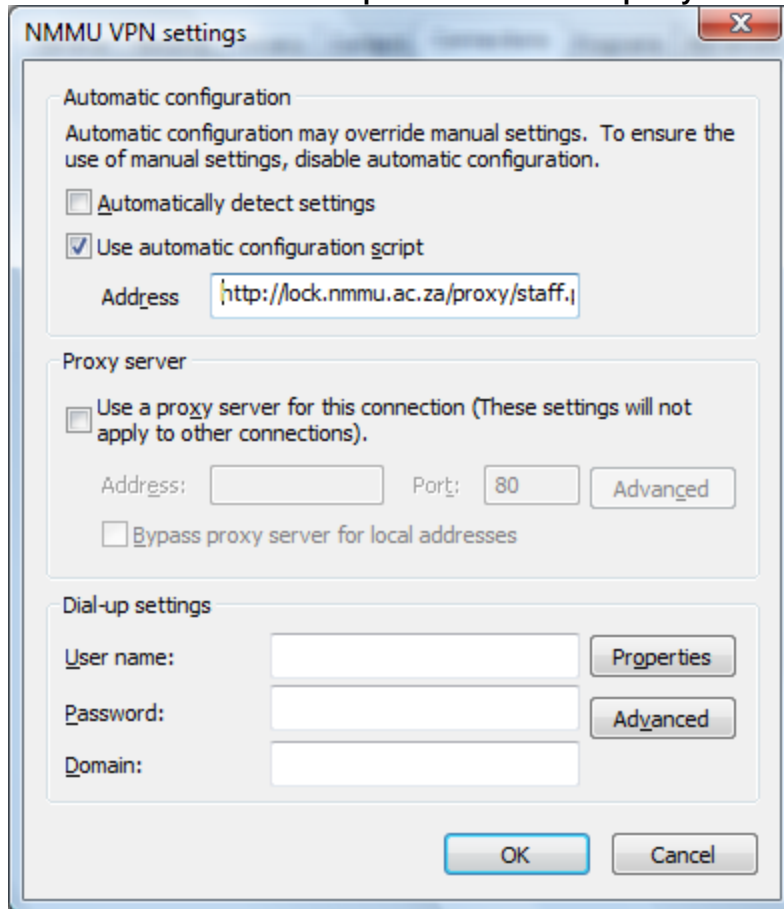
3. Click on the **Connections** tab.
4. Select **NMMU VPN** (or the name given to your VPN connection in step 9 of the VPN connection setup).
5. Click the **Settings** button.



6. Make sure than only the **Use automatic configuration script** checkbox is ticked – nothing else should be ticked.

6a. Staff enter **http://lock.nmmu.ac.za/proxy/staff.pac** in the **Address** field.

6b. Students enter **http://lock.nmmu.ac.za/proxy/student.pac** in the **Address** field.



7. Click **OK** to apply the settings and close the **VPN Settings** dialog box.

8. Click **OK** to close the **Internet Options** dialog box.

This procedure also only needs to be followed once on the PC that you are using. Internet Explorer should work once this is done.

If you have followed these steps, and you still have problems, please call the ICT Services Helpdesk at ext. **3000** (Mon – Fri, 07:30 – 16:30).