

## *NMMU Wireless Network Profile Configuration Guidelines*

**Revision:**

1

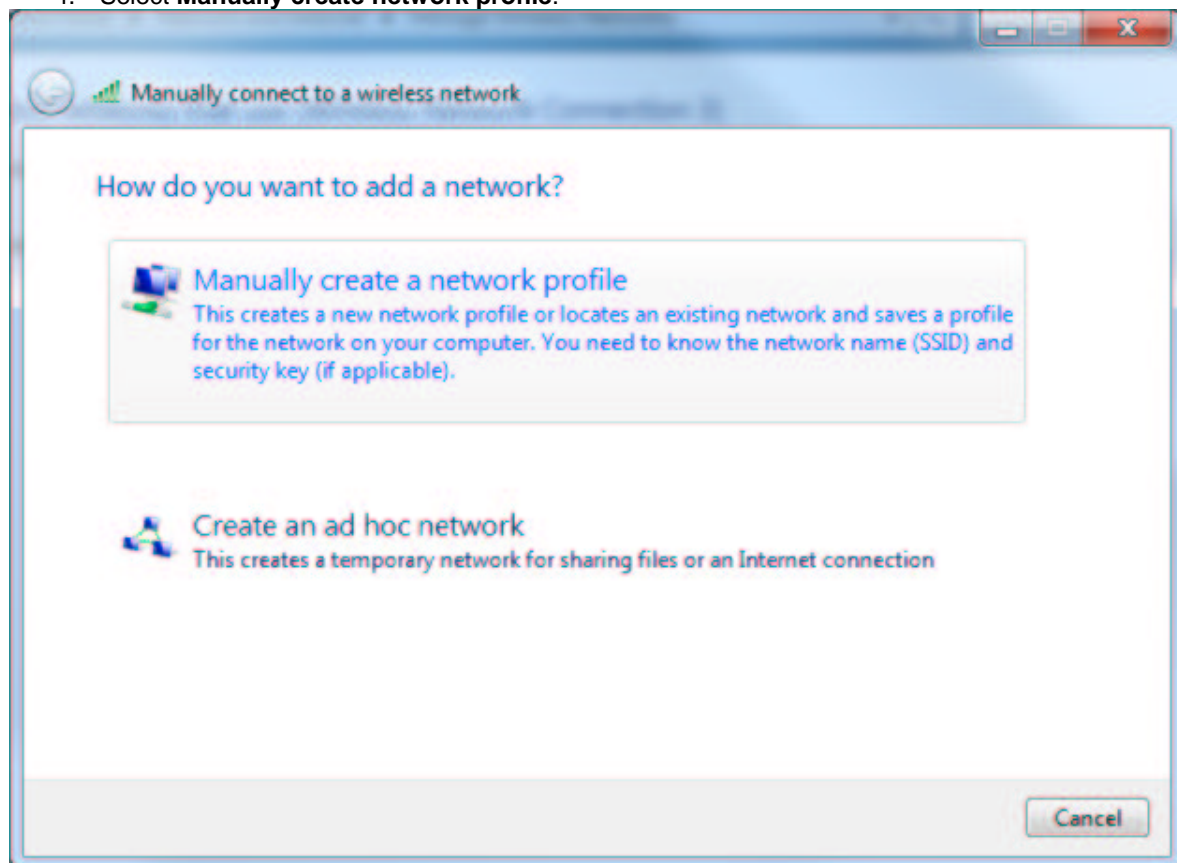
**Date:**

3 October 2011

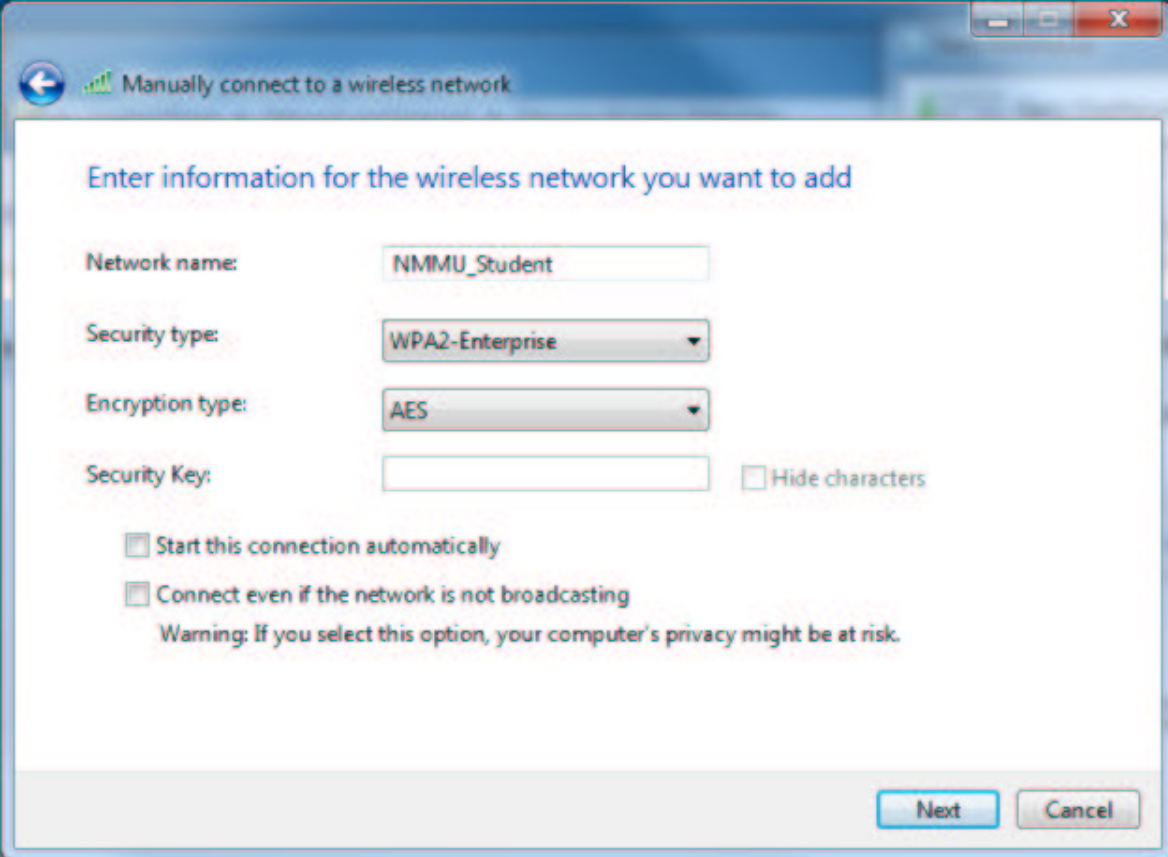
### *Configuration for Microsoft Windows 7 Enterprise Edition*

#### **Manually Creating a Wireless Network Profile**

1. Click **Start** -> **Control Panel** -> **Network and Internet** -> **Network and Sharing Centre**.
2. Click on **Manage wireless networks**.
3. Click on the **Add** button.
4. Select **Manually create network profile**.



5. Enter the network name e.g. **NMMU\_Staff**, **NMMU\_Student**, **eduroam** (this name is cAsEsEnSiTiVe!), select **WPA2-Enterprise** as security type, and select **AES** as encryption type. **Start this connection automatically** should be *unticked*. Click **Next** to continue.



Manually connect to a wireless network

Enter information for the wireless network you want to add

Network name:

Security type:

Encryption type:

Security Key:   Hide characters

Start this connection automatically

Connect even if the network is not broadcasting

Warning: If you select this option, your computer's privacy might be at risk.

The following limitations apply when setting up/connecting to an NMMU wireless network:

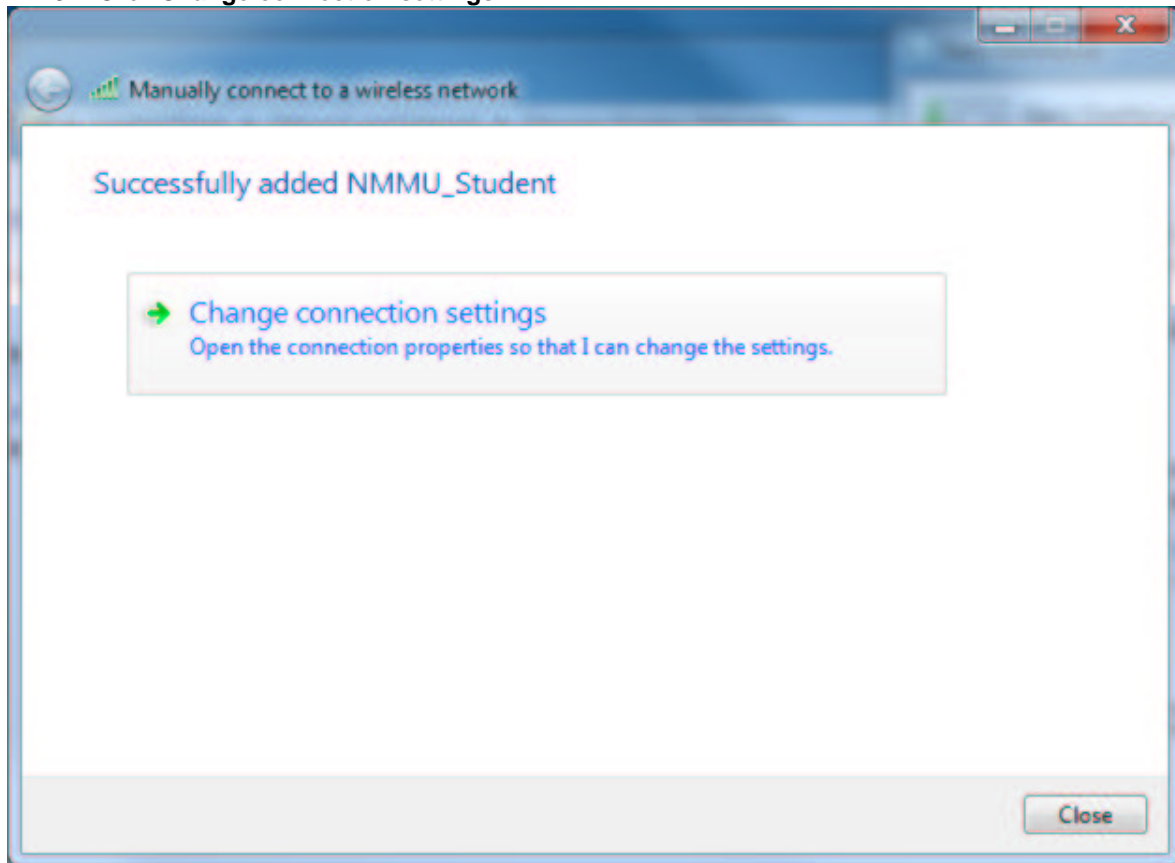
- **NMMU\_Staff:** Only NMMU staff members can connect to this wireless network
- **NMMU\_Student:** Only NMMU students can connect to this wireless network
- **eduroam:** Any NMMU user, or any user from an eduroam affiliated institution, can connect to this wireless network.

When prompted for a username and a password, please use the following format:

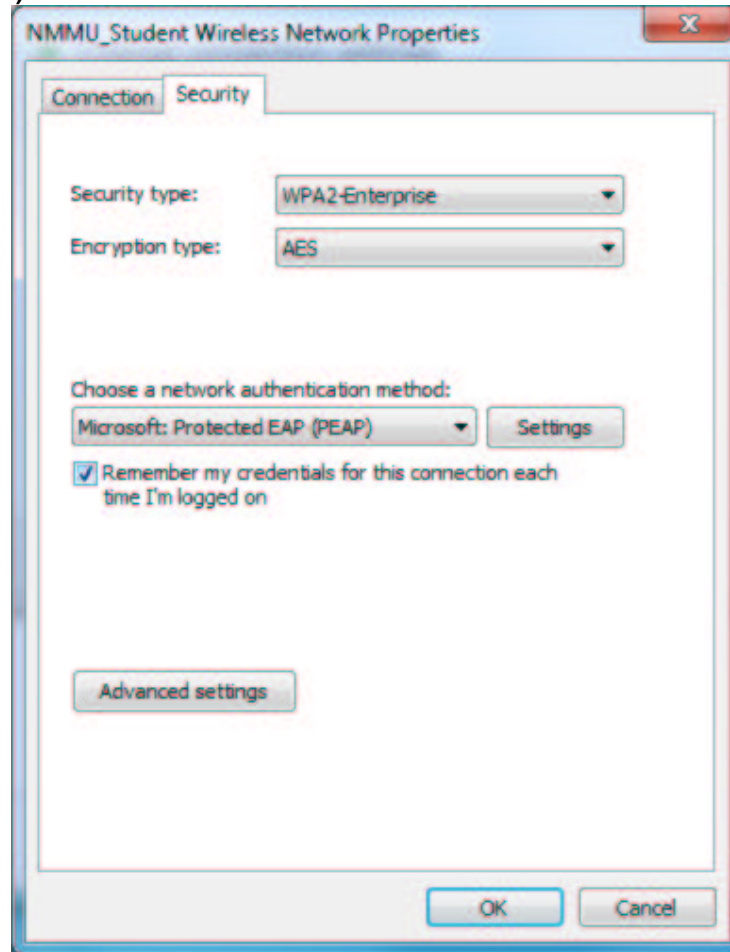
- Username: username@nmmu.ac.za (e.g. s222212345@nmmu.ac.za or user123@nmmu.ac.za)
- Password: Your "normal" NMMU domain password.

The abovementioned username **is not** necessarily your e-mail address. It is merely the format required to identify you as an NMMU registered user and is used for authentication purposes only.

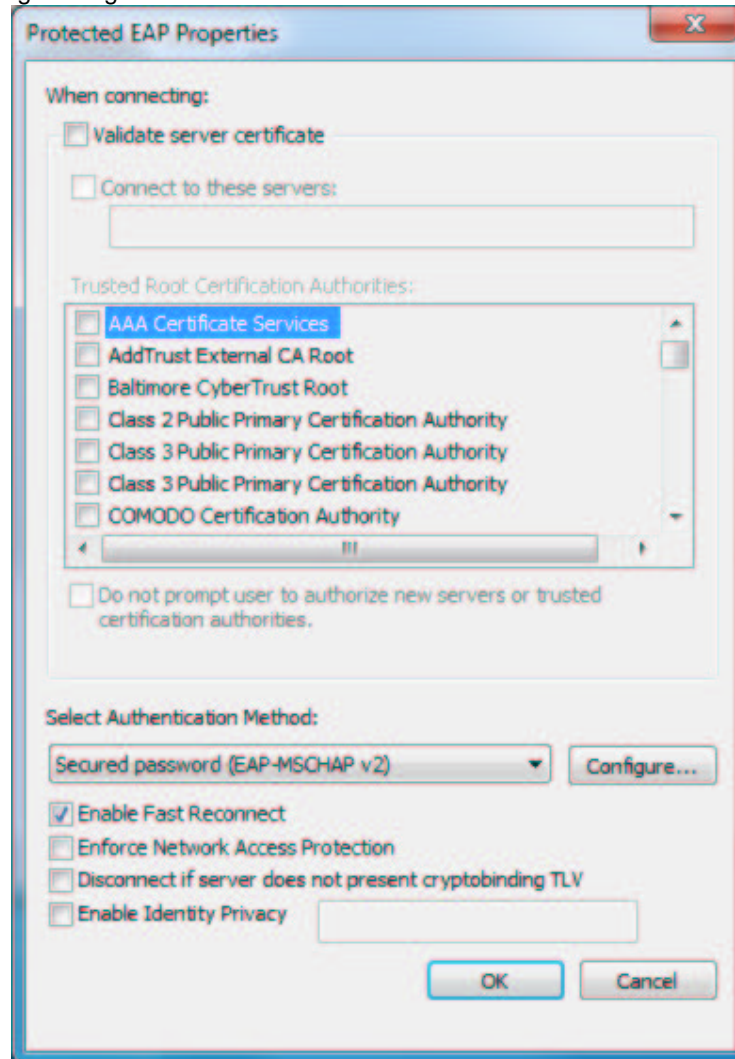
6. Click **Change connection settings**.



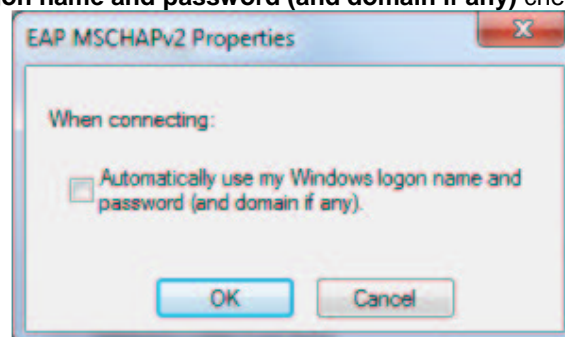
7. Click on the **Security** tab, and then click on the **Settings** button next to **Microsoft: Protected EAP (PEAP)**.



8. Ensure that the **Validate server certificate** checkbox is *unticked*, and click **OK** to close the PEAP settings dialog.



9. Optional: If your PC is part of the NMMU domain, your Windows logon name and password will be used by default for authentication. If you do not want to use these credentials, click on the **Configure** button next to **Secured password (EAP-MSCHAP v2)**, and *untick* the **Automatically use my Windows logon name and password (and domain if any)** check box.



Click **OK** to close the EAP MSCHAPv2 Properties dialog.

Telephone +27 (41) 504-1111 Fax +27 (41) 504-2574  
University Way, Summerstrand, Port Elizabeth  
P.O. Box 77000, Port Elizabeth, 6031



10. Click **OK** again to close the Wireless Network Properties.
11. Click **Close** to finish the wireless network setup.

If you have followed these steps, and you still have problems, please call the ICT Services Helpdesk at ext. **3000** (Mon – Fri, 07:30 – 16:30).